

**EEDW**

Extending Equity into the Digital Workforce

**Four Corners**  
Regional Education Cooperative #1

**EIRB-US Department of Education**  
**Project Award #: S411B210027**

**David Bowman, executive director**  
director@nmrec1.org  
nmrec1.org

## purpose

increase readiness for IT careers among

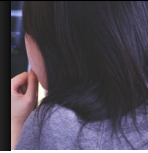
- low-income youth
- first-generation college enrollers
- racially and ethnically diverse students, and
- other underrepresented populations



[nmrec1.org/digital-equity](http://nmrec1.org/digital-equity)



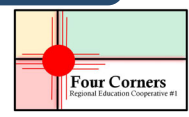
# project goals



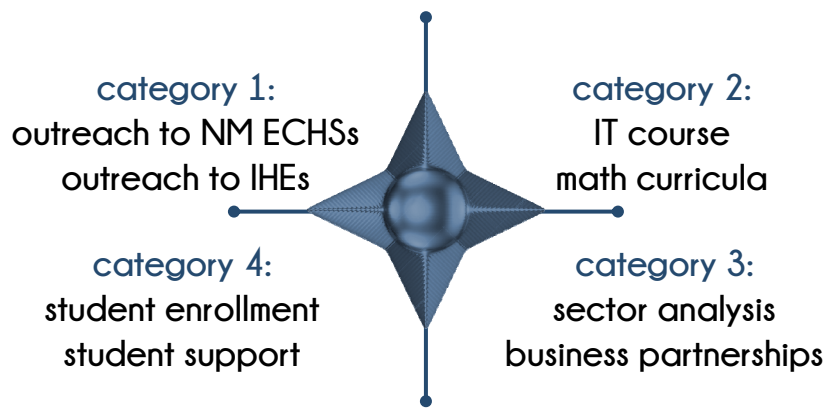
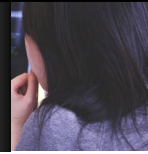
- goal 1 Build programs that will increase college readiness and postsecondary enrollment in high demand IT / STEM careers.
- goal 2 Narrow the opportunity gaps in the state's education system for students of color and other high-need students.
- goal 3 Increase efficiencies and build capacity for designated programs



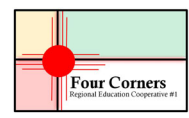
nmrec1.org/digital-equity



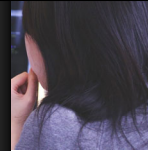
# activity categories



nmrec1.org/digital-equity



# objective 1



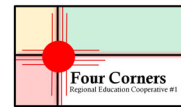
*20 ECHSs offer the Online IT ECHS career pathway*

## Associated activities

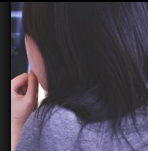
1. white papers
2. webinars: pathway components, timelines, etc.
3. professional development
4. ensure student support
5. monthly Digital Equity meetings



[nmrec1.org/digital-equity](http://nmrec1.org/digital-equity)



# objective 2



*increase student preparedness for STEM college pathways and digitally rich workplaces*

## Associated activities

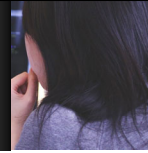
1. IT course sequence, courses
2. 2+ instructors
3. deliver through platform
4. Pathways: algebra I & II, geometry



[nmrec1.org/digital-equity](http://nmrec1.org/digital-equity)



## objective 3



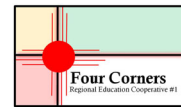
*30+ business partners engage with students online as role models, mentors, and career guides*

### Associated activities

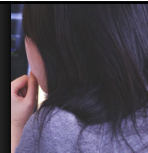
1. review & update CLNA findings relative to IT
2. engage business / industry partners
3. industry videos
4. monthly Q&A sessions for students
5. capstone projects
6. workplace experiences



[nmrec1.org/digital-equity](http://nmrec1.org/digital-equity)



## objective 4



*2900 ECHS students will have an opportunity to enroll in the Online IT ECHS Career Pathway*

### Associated activities

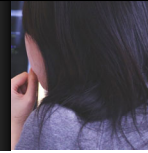
1. enroll 525 9th graders / year (2,900 overall)
2. local advisement, support



[nmrec1.org/digital-equity](http://nmrec1.org/digital-equity)



# people: ELC



## *executive leadership council:*



project director



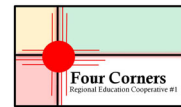
ECHS outreach coordinator



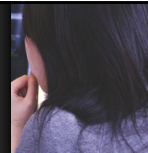
IHE ECHS representative



[nmrec1.org/digital-equity](http://nmrec1.org/digital-equity)



# people: PAT



## *project advisory team:*



NM PED



ECHS principals' council



local community organizations

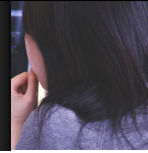
(monthly meetings)



[nmrec1.org/digital-equity](http://nmrec1.org/digital-equity)



# people: BPG



## *business partnership group:*

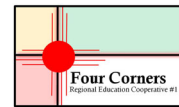


representative from each business partner

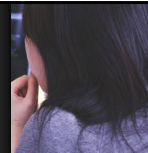
(monthly meetings)



[nmrec1.org/digital-equity](http://nmrec1.org/digital-equity)



# project team



## *salaried positions:*



project coordinator / director



administrative manager (assistant)



ECHS-IT coordinator



ECHS career counselor



HED IT ECHS coordinator



HED IT ECHS associate professor



business / industry IT coordinator



[nmrec1.org/digital-equity](http://nmrec1.org/digital-equity)



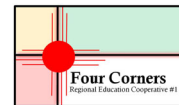
## major benchmarks, y1

- 2022, FEB: fiscal, operations set-up
- 2022, MAR: personnel, PAT, ECHS outreach
- 2022, JUNE: enrollment promotions
- 2022, SEPT: business partners identified, prof. devel.
- 2022, AUG: IT & math course delivery, enrollment
- 2022, DEC: videos (set one)

*note: 6-month planning period (January–June)*



[nmrec1.org/digital-equity](http://nmrec1.org/digital-equity)



## internal operations

- David Bowman  
project director / executive director  
[director@nmrec1.org](mailto:director@nmrec1.org)
- Jodie Maestas  
finance manager  
[jmaestas@bsin.k12.nm.us](mailto:jmaestas@bsin.k12.nm.us)
- TBD: administrative support



[nmrec1.org/digital-equity](http://nmrec1.org/digital-equity)

